

WEEKLY PETROL PRICES **REPORT**

Week ending 8 February 2026

Welcome to the latest AIP Weekly Petrol Prices Report.

All data, charts and tables in this report are based on the latest available market data to **Sunday, 8 February 2026**

For more detailed information on:

Pricing Facts – see

<https://www.aip.com.au/facts-about-prices>

Terminal Gate Prices (wholesale) – see

<https://aip.com.au/pricing/terminal-gate-prices>

Pump Prices (retail) – see

<https://aip.com.au/pricing/pump-prices>

International Fuel Prices – see

<https://aip.com.au/pricing/international-prices/international-market-watch>

In the AIP Weekly Petrol Prices Report:

- the data for international crude oil and petrol prices is supplied by Argus Media – see www.argusmedia.com/.
- the data for wholesale petrol prices is based on market data published by AIP member companies (BP, Viva Energy Australia, Mobil and Ampol) – see www.aip.com.au/.
- the data for retail petrol prices is based on available market data supplied by MotorMouth – see www.motormouth.com.au.

Should you have any questions about the material in this report,
please contact AIP at aip@aip.com.au.

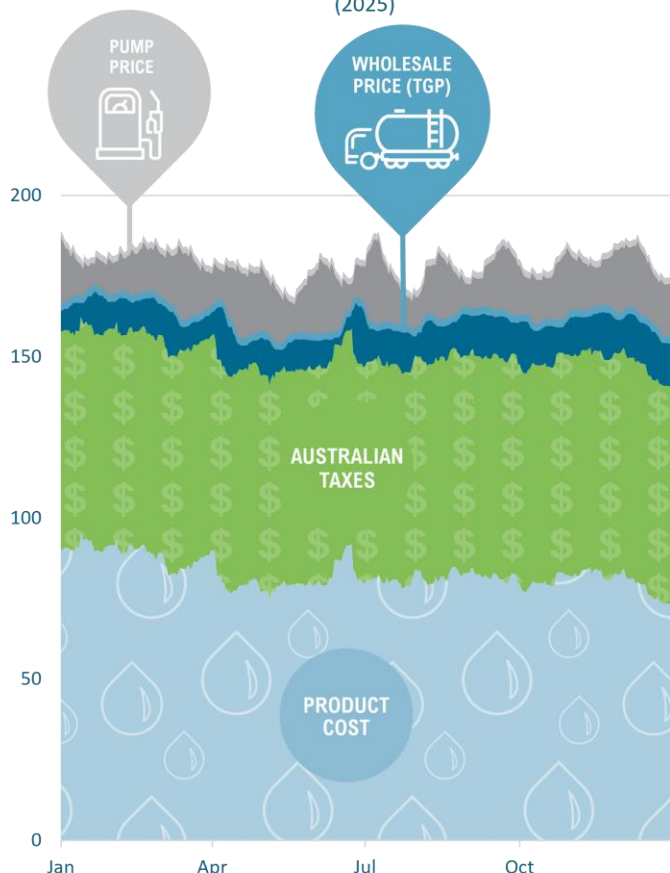
The Australian Fuel Market - An Overall Snapshot

Understanding Movements in Key Petrol Price Indicators

The Chart below is a static snapshot from 2024 that demonstrates the movements in key market indicators relevant to the price of petrol in Australia.

The Australian refining sector is a price taker. Domestic prices are closely linked to relevant international prices. The Singapore benchmark price of petrol (MOGAS95) is the key price benchmark for petrol in Australia. As the chart below shows, MOGAS95 Petrol plus shipping costs and Australian taxes represents almost the entire wholesale price of petrol.

Daily Unleaded Petrol Prices – Australian National Average
(2025)



The grey area is the difference between the national average retail price (pump) and the national average wholesale price (Terminal Gate Price, also known as TGP).

This shaded area is not profit as it includes a range of retailing costs. Costs relate to land transport, administration and retail marketing, running a service station (including wages, rent and utilities), and corporate taxes and other government charges on retailing activities

The blue area is the difference between the Singapore gasoline price plus government taxes and the national average wholesale price (TGP).

This shaded area is not profit as it includes a range of wholesaling costs. Costs relate to the quality premium (marked costs) for Australian fuel standards, insurance and loss, local wharfage, terminal operating, administration and marketing costs and corporate taxes and government charges on wholesaling activities.



Product Cost

Singapore petrol price (MOGAS95)
Shipping cost



Australian Taxes

Excise – 51 cents per litre
(indexed twice a year to CPI)
GST – 10%

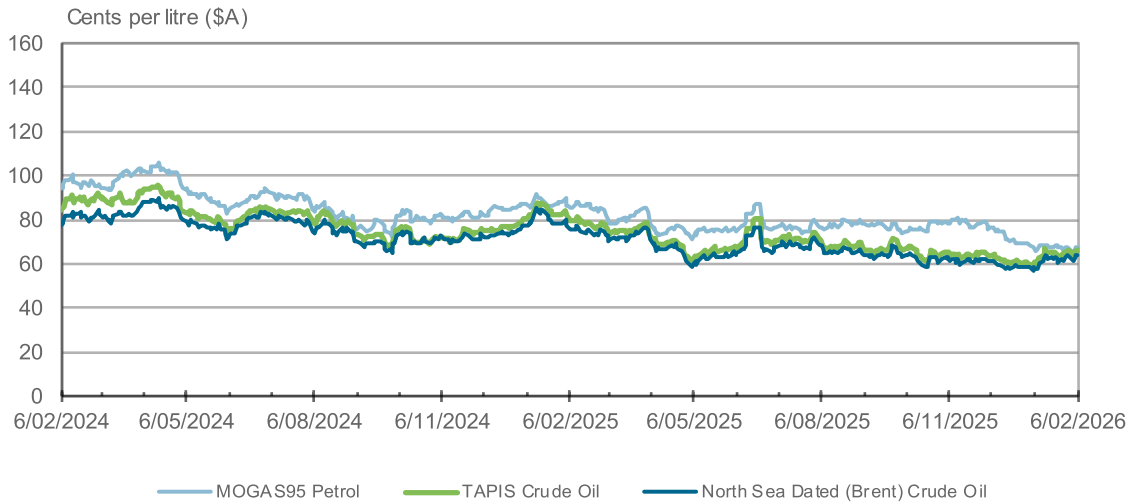
Average Petrol retail price this week: 166.1 cents
Average Petrol wholesale price this week: 153.1 cents

NOTES

- (1) **MOGAS95 PETROL:** the international petrol prices are provided by the Argus Media Group, and represent the end of day assessment for the midpoint of Singapore prices for 95 Octane Petrol (MOGAS95). The Australian Institute of Petroleum obtains confidential proprietary data from the Argus Media group under license, from which data the Australian Institute of Petroleum conducts and publishes its own calculations and opinions. Argus makes no warranties, express or implied, as to the accuracy, adequacy, timeliness, or completeness of its data or the Australian Institute of Petroleum's calculations or opinions, or their fitness for any particular purpose. Argus shall not be liable for any loss or damage arising from any party's reliance on Argus' data or the Australian Institute of Petroleum's calculations or opinions, and disclaims any and all liability related to or arising out of use of Argus' data and/or the Australian Institute of Petroleum's calculations and opinions to the full extent permissible by law. For further information about Argus products and services, see www.argusmedia.com.
- (2) **SHIPPING:** AIP estimate, based on various sources (e.g. Argus, ACCC, Australian Petroleum Statistics and the Reserve Bank of Australia).
- (3) **TAXES:** is excise and GST less any relevant state rebates weighted by the volume of petrol consumed in each State.
- (4) **NATIONAL AVERAGE WHOLESALE PRICES:** are derived from capital city prices weighted by fuel volume consumed in each State.
- (5) **NATIONAL AVERAGE RETAIL PRICES:** are calculated as the weighted average of each State/Territory's metropolitan and non metropolitan retail petrol prices, with the weights based on the number of registered petrol vehicles in each of these regions.

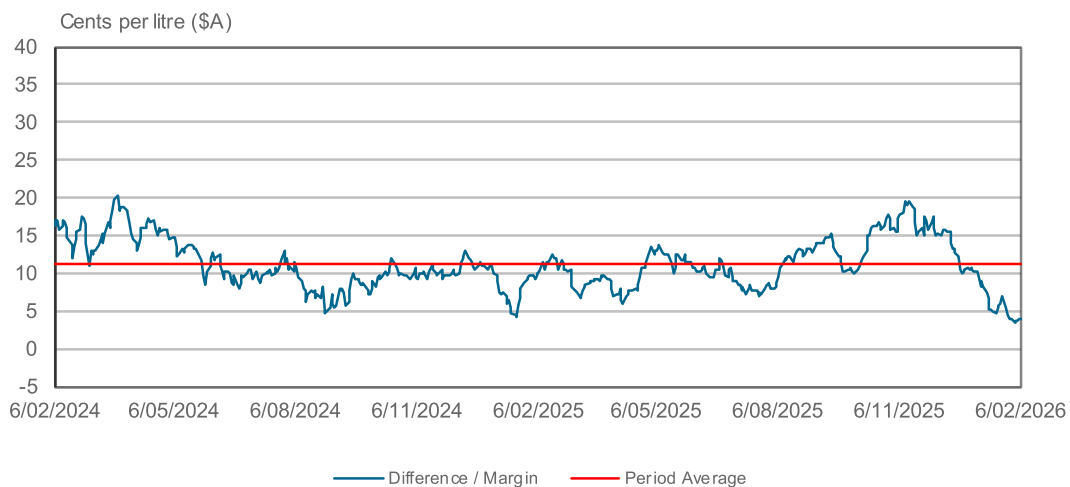
International Market Trends

Figure 1: Comparison of Singapore petrol price (MOGAS95) with crude oil prices



NOTE: Australia is a significant part of the Asia-Pacific fuel market. The Australian market looks to Singapore, which is the regional refining and distribution centre, for relevant pricing benchmarks for petrol prices for unleaded petrol (Argus 95R gasoline/MOGAS95) and to Tapis and North Sea Dated (Brent) for crude oil. Argus Media publishes prices for Tapis and Dated Brent ("North Sea Dated" in Argus terminology). Countries across the Asia-Pacific region including Australia use North Sea Dated and its derivatives as benchmarks for crude oil contract purposes and spot transactions. For information on crude oil pricing in Asia see <http://www.aip.com.au/pricing/crude.htm>.

Figure 2: Difference between market prices
MOGAS95 Petrol Price Minus North Sea Dated (Brent) Crude Oil price



NOTE: The refiner margin above is the difference between market prices for MOGAS95 and Brent. It is not a figure determined by refiners.

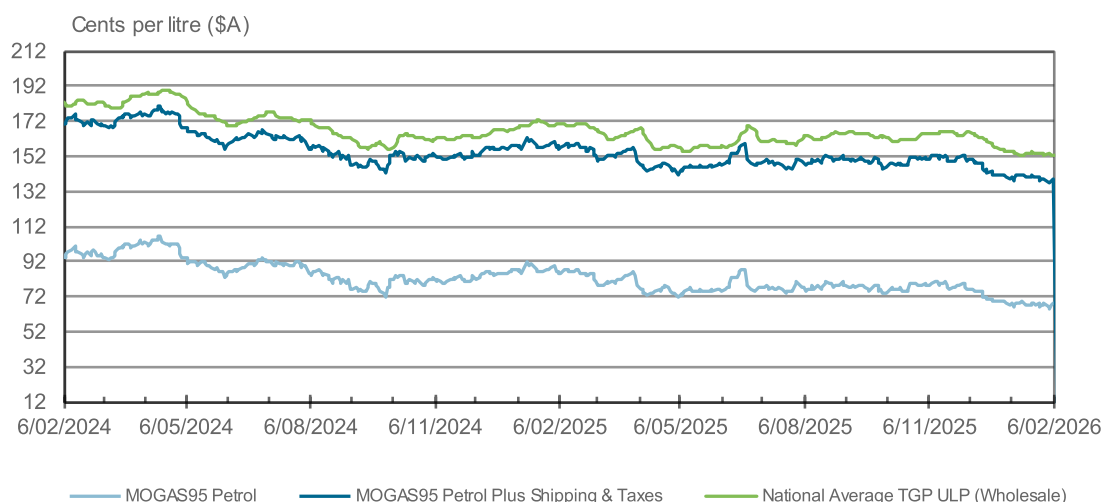
Cents per litre (A\$)	TAPIS CRUDE OIL	NORTH SEA DATED (BRENT) CRUDE OIL	MOGAS95 PETROL
Average: Last Week (to Friday 06/02/26)	65.3	63.0	66.7
Average: Previous Week (to Friday 30/01/26)	64.9	62.7	67.1
Average: Last 4 Weeks	64.9	62.6	67.5
Average: Last 12 Weeks	63.2	60.8	71.5
Average: Last 12 Months	68.3	65.7	76.8

PLEASE NOTE

Differences/margins between market prices or benchmarks are used as indicators of general trends in the petroleum market, **they do not represent profits** accruing to oil companies at the refining, wholesale or retail segments of the market. For each market segment, a range of costs would need to be deducted to determine actual profits.

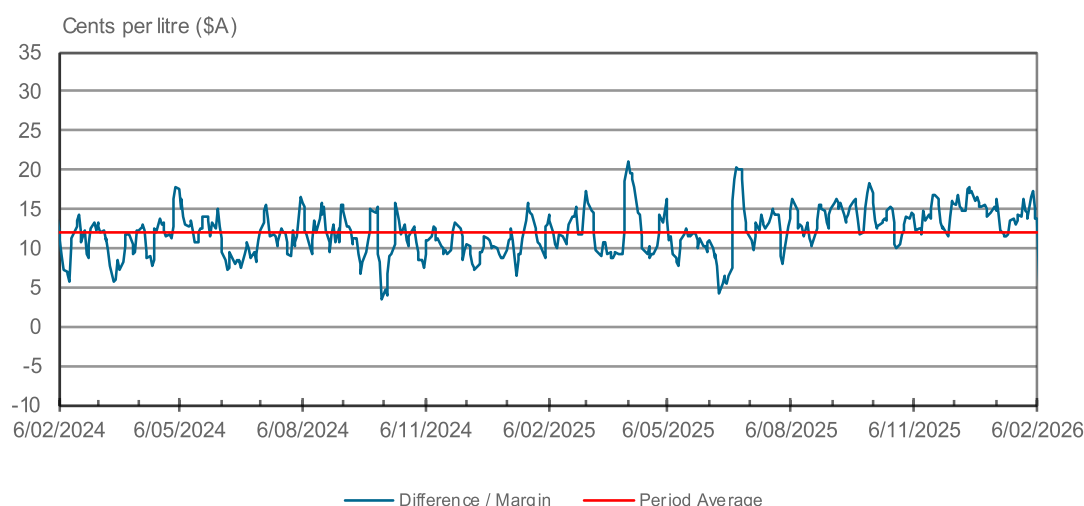
Australian Wholesale Market Trends

Figure 3: Comparison of Australian TGP ULP (or ‘wholesale price’) with Singapore petrol price (MOGAS95 Petrol)



NOTE: The MOGAS95 Petrol prices and shipping rates are provided by Argus Media Group, see Notes on page 2.

Figure 4: Difference between market prices
National Average TGP ULP minus MOGAS95 Petrol (plus shipping and taxes)



MOGAS95 PETROL	Cents per litre (A\$)	TGP ULP (National Average)	Cents per litre (A\$)
Average: Last Week (to Friday 06/02/26)	66.7	Average: Last Week (to Friday 06/02/26)	153.1
Average: Previous Week (to Friday 30/01/26)	67.1	Average: Previous Week (to Friday 30/01/26)	153.6
Average: Last 4 Weeks	67.5	Average: Last 4 Weeks	153.4
Average: Last 12 Weeks	71.5	Average: Last 12 Weeks	158.4
Average: Last 12 Months	76.8	Average: Last 12 Months	161.5

PLEASE NOTE

Differences/margins between market prices or benchmarks are used as indicators of general trends in the petroleum market, **they do not represent profits** accruing to oil companies at the refining, wholesale or retail segments of the market.

For each market segment, a range of costs would need to be deducted to determine actual profits.

For example, at the wholesale level, a range of costs (including ‘landed costs’ and ‘wholesaling costs’) would need to be deducted to determine actual profits at the wholesale level. These ‘landed costs’ include the costs of the quality premium (market cost) for Australian fuel standards, insurance and loss, and local wharfage costs. The standard ‘wholesaling costs’ include terminal operating costs, administration and wholesale marketing costs and corporate taxes and government charges on wholesaling activities.

Average Terminal Gate Prices (TGP's) Across Australia

Week ended 8 February 2026

UNLEADED PETROL (cents per litre \$A)

	Monday 2 February 2026	Tuesday 3 February 2026	Wednesday 4 February 2026	Thursday 5 February 2026	Friday 6 February 2026
Sydney	153.4	153.2	152.5	152.2	152.0
Melbourne	153.9	153.9	153.1	152.8	152.7
Brisbane	153.7	153.5	152.8	152.6	152.4
Adelaide	153.2	153.2	152.6	152.3	152.1
Perth	153.2	153.0	152.4	152.2	152.0
Darwin	157.5	157.5	156.8	156.5	156.4
Hobart	156.9	157.0	156.6	156.2	156.2

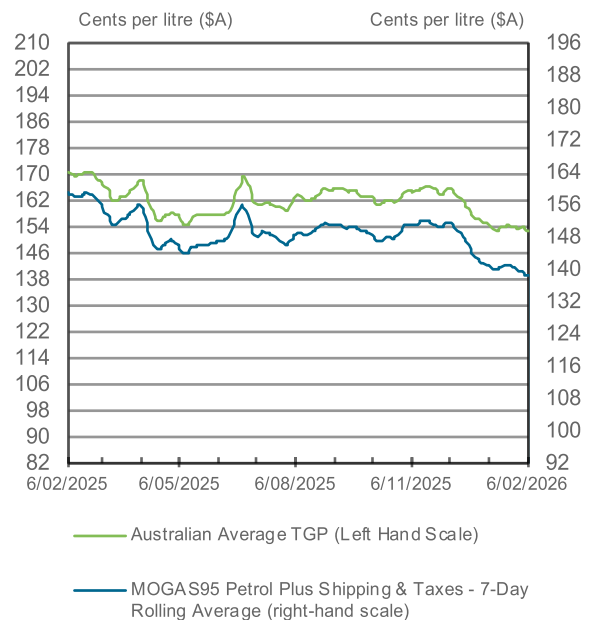
NOTES: Daily TGP data are published by all wholesale fuel suppliers. AIP's website presents average TGP data for each weekday – see www.aip.com.au/pricing/tgp.htm. This data has been prepared by ORIMA Research Pty Ltd on behalf of AIP, using information from BP Australia, Ampol, Viva Energy Australia, and ExxonMobil Australia. Prices shown are the average TGP for unleaded petrol across each of these companies for the day.

Explaining the time lag between changes in Singapore prices and changes in Australian wholesale petrol prices

Generally, there is a short time lag of 1-2 weeks between changes in Singapore prices and changes in Australian prices.

- ⇒ The lag can be seen in FIGURE 3 on the previous page. That is, see the slight delay in the peaks and troughs in the **green line** (National Average TGP) compared to the **blue line** (MOGAS95 Petrol plus Shipping & Taxes).
- ⇒ Importantly, this time lag occurs whether:
 - prices are going up (when the lag slows price rises to consumers)
 - or prices are going down (when the lag delays price falls).
- ⇒ The lag is a result of using a rolling average of Singapore prices as part of the wholesale pricing methodology (very similar to that used by the ACCC when wholesale prices were regulated by government). The pricing methodology is called import parity pricing (IPP).
- ⇒ The use of rolling averages smooths day-to-day price volatility.
- ⇒ Not accounting for this lag, introduced by the rolling average, leads to incorrect conclusions about how Singapore prices flow through to prices in Australia.

The very close relationship between changes in MOGAS95 Petrol and changes in Australian TGPs can be seen by applying a rolling average to the MOGAS95 Petrol data (a 7 day rolling average is used in the Chart to the right to illustrate this).



Australian Retail Market Trends

Figure 5: Comparison of Australian pump price with Australian TGP
Average Retail Price versus Average Wholesale Price

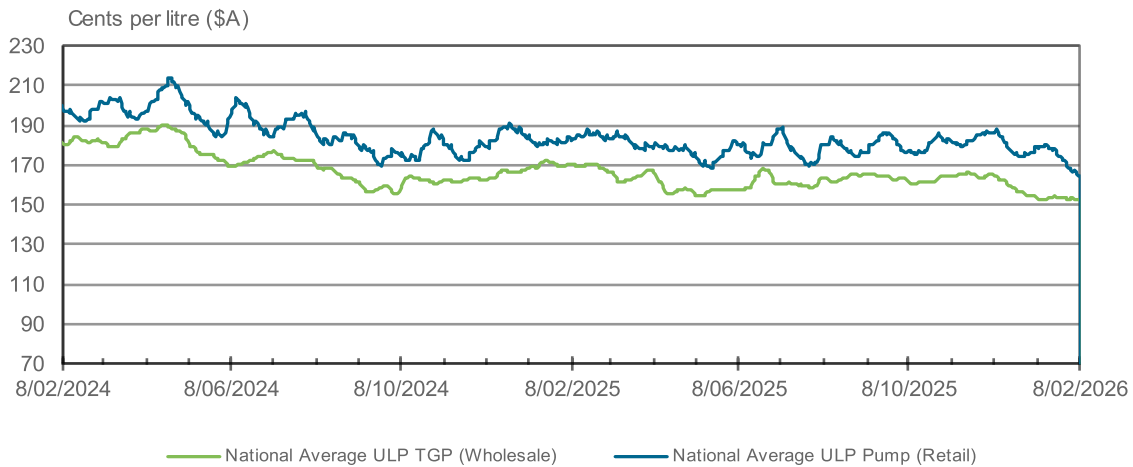
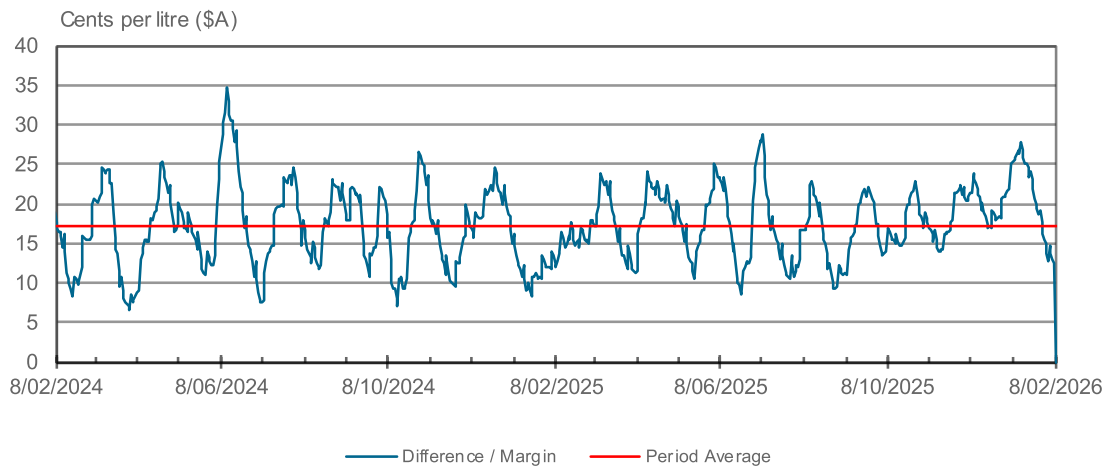


Figure 6: difference between market prices
Australian Average Retail Price minus Average Wholesale Price



Wholesale: TGP ULP (National Average)	Cents per litre (A\$)	Retail: Pump Price ULP (National Average)	Cents per litre (A\$)
Average: Last Week (to Friday 06/02/26)	153.1	Average: Last Week (to Sunday 08/02/26)	166.1
Average: Last Week (to Friday 30/01/26)	153.6	Average: Last Week (to Sunday 01/02/26)	170.7
Average: Last 4 Weeks	153.4	Average: Last 4 Weeks	173.2
Average: Last 12 Weeks	158.4	Average: Last 12 Weeks	178.3
Average: Last 12 Months	161.5	Average: Last 12 Months	179.2

PLEASE NOTE

- (1) The data for **retail petrol prices** is based on available market data supplied by MotorMouth (see www.motormouth.com.au).
- (2) There is a **time lag** between changes in Australian wholesale (TGP) petrol prices and the change in retail petrol prices which needs to be taken into account when comparing relative price movements. According to the ACCC, this time lag can be longer during times of significant volatility in international and wholesale petrol prices.
- (3) Differences/margins between market prices or benchmarks are used as indicators of general trends in the petroleum market, **they do not represent profits** accruing to oil companies at the refining, wholesale or retail segments of the market. For each market segment, a range of costs would need to be deducted to determine actual profits. For example at the retail level, a range of standard retailing costs would need to be deducted to determine actual profits. These costs include:
 - ⇒ land transport costs (of getting fuel from the terminal gate to the petrol bowser)
 - ⇒ administration and retail marketing costs
 - ⇒ the costs of running service stations like wages, rent and utilities
 - ⇒ corporate taxes and other government charges on retailing activities

Summary: Retail Petrol Price Trends Across States/Territories

Week ended 8 February 2026

'NATIONAL AND STATE' AVERAGE PRICES (cents per litre \$A)

	Weekly Average	Weekly Change	Low	High
National Average	166.1	-4.6	164.7	167.6
NSW / ACT	170.8	-8.3	167.1	175.2
Victoria	161.6	-3.8	161.3	161.8
Queensland	163.6	-3.6	163.2	164.3
South Australia	162.0	-2.3	161.3	162.7
Western Australia	167.0	-0.4	161.1	177.4
Northern Territory	194.0	-1.2	193.2	194.6
Tasmania	172.4	-0.6	171.9	172.6

'METROPOLITAN' AVERAGE PRICES (cents per litre \$A)

	Weekly Average	Weekly Change	Low	High
National Metropolitan Average	163.8	-6.5	161.9	166.0
Five Major Capital City Average	162.4	-5.6	160.6	165.5
Sydney	170.0	-14.6	163.5	177.7
Canberra	183.2	-2.6	181.8	184.7
Melbourne	159.4	-4.9	159.0	159.8
Brisbane	160.1	-5.1	159.4	161.3
Adelaide	157.7	-2.8	157.0	158.4
Perth	165.2	-0.5	157.7	178.6
Darwin	180.1	-1.3	179.3	180.7
Hobart	168.2	-0.7	167.8	168.4

'REGIONAL' AVERAGE PRICES (cents per litre \$A)

	Weekly Average	Weekly Change	Low	High
National Regional Average	170.8	-0.8	170.5	171.2
NSW / ACT	170.3	-0.8	169.9	170.8
Victoria	167.7	-0.7	167.5	167.9
Queensland	170.2	-0.8	170.0	170.5
South Australia	174.2	-1.1	173.7	174.9
Western Australia	173.4	-0.4	173.3	173.5
Northern Territory	231.8	-1.1	231.2	232.3
Tasmania	175.4	-0.6	174.9	175.7

For average weekly retail (pump) prices for petrol and diesel across Australian cities and towns, please see <https://aip.com.au/pricing/pump-prices>

NOTES

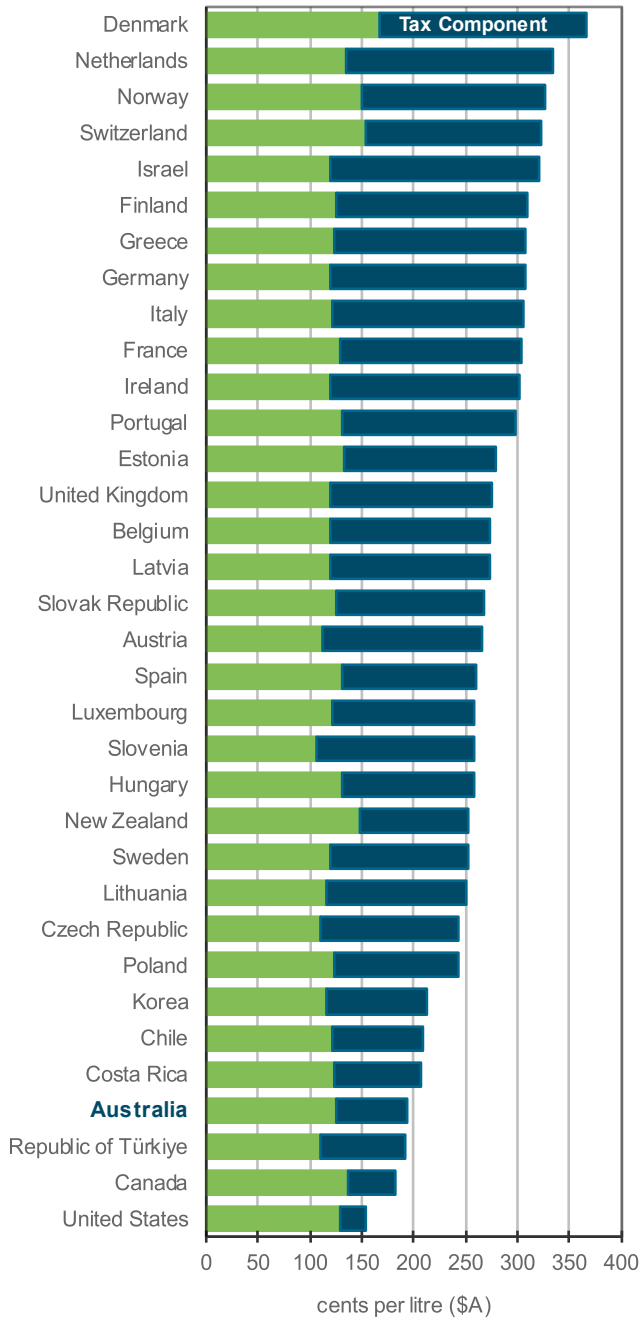
- (1) The data for retail petrol prices is based on available market data supplied by MotorMouth (see www.motormouth.com.au).
 - (2) The National Average Retail Price is calculated as the weighted average of each State/Territory's metropolitan and non metropolitan retail petrol prices, with the weights based on the number of registered petrol vehicles in each of these regions.
 - (3) The National Metropolitan Average price is calculated as the weighted average of the retail petrol prices across each capital city, where the weights are based on the number of vehicles using petrol registered in each city.
 - (4) The Five Major Capital City Average is the unweighted average of the prices for Sydney, Melbourne, Brisbane, Adelaide and Perth.
 - (5) The Regional Average price is calculated as the weighted average of the retail petrol prices for the non-metropolitan regions in each State/Territory, where the weights are based on the number of vehicles using unleaded petrol in each region.
 - (6) The vehicle data source is ABS Motor Vehicle Census, 2011, Cat No 9309.0.
 - (7) 'Weekly Low' and 'Weekly High' are based on the lowest and the highest average daily prices in the relevant area. The average daily price for each region (eg. Geelong) is calculated as a straight numerical average of all 'price points' provided for that day. Aggregate daily prices are based on a weighted average of all regions (eg. Geelong, Ballarat, Wodonga etc) in the relevant area (eg. Victoria) where weights are based on the number of vehicles using unleaded petrol in each region.
 - (8) Weekly Average prices are a straight average of the seven days.
 - (9) Weekly Change is the change compared with the Weekly Average last week.
- For more information on data methodology, please see the AIP Website (www.aip.com.au/pricing/retail.htm).

Petrol and Diesel Prices & Taxes in OECD Countries

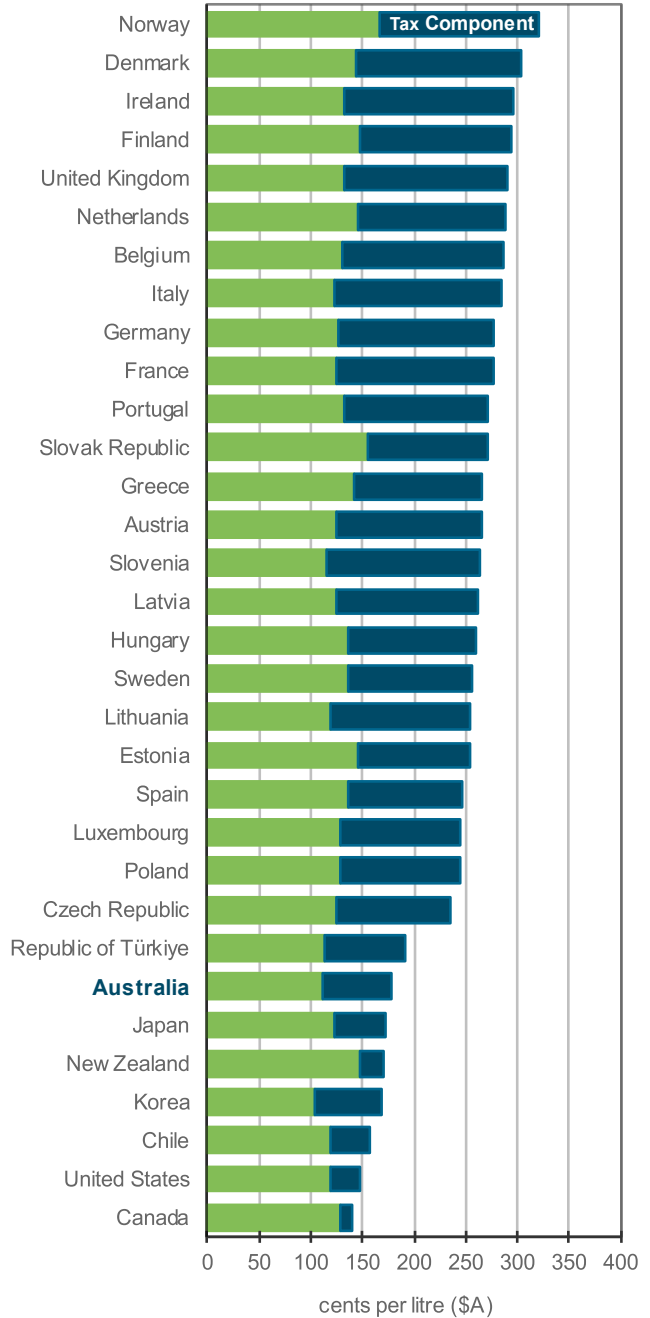
June Quarter 2025

The Charts show Australia has among the lowest petrol and diesel prices of all OECD countries.

Petrol Prices and Taxes in OECD Countries



Diesel Prices and Taxes in OECD Countries



Source: Australian Petroleum Statistics, Office of the Chief Economist